

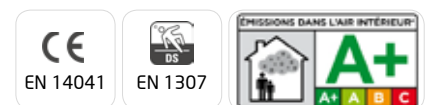
Blush Inspirations

Gauge	1/8
Manufacturing	Cut Pile
Pile description	Saphira
Primary backing	Woven
Pile weight	2050 gr/m ²
Number of tufts	176.377 /m ²
Secondary backing	Cosyback
Width	400 cm
Total weight	2550 gr/m ²
Total height	12,5 mm
Pile In/Out	In
Roll length	20 m
DOP	1087#01035/15262/XI
Fire classification	Cfl-s1
Use classification	23/31
TOG rating	1,15



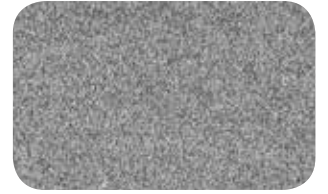
Available colours	Cosyback 400 cm	109 116 140 154 157 230 304 305 317 405 406 408 474 760 853 880 895 964
-------------------	-------------------	---

Colour legend	109	Steel	116	Stone	140	Ash
	154	Light Grey	157	Pebble	230	Mint
	304	White Swan	305	Pearl	317	Natural
	405	Ashes of Roses	406	Rose Taupe	408	Hazy Earth
	474	Peach	760	Cognac	853	Purple Haze
	880	Atlantic	895	Blue Bell	964	Walnut



These details are approximate. Complete specification details and associated certificates together with tolerances applying to the above can be provided upon request. We reserve the right to modify technical specifications without prior notice. Due to method of manufacture perfect pattern and/or colour matching can not be guaranteed. In cut-pile carpeting, in rare cases, shading/pile reversal may occur without affecting its fitness for use. Shading/pile reversal can not be considered as a manufacturing or a material defect and will not affect the durability of the carpet.

Blush Inspirations



109 - 400 cm



116 - 400 cm



140 - 400 cm



154 - 400 cm



157 - 400 cm



230 - 400 cm



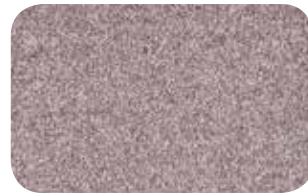
304 - 400 cm



305 - 400 cm



317 - 400 cm



405 - 400 cm



406 - 400 cm



408 - 400 cm



474 - 400 cm



760 - 400 cm



853 - 400 cm



880 - 400 cm



895 - 400 cm



964 - 400 cm