



E S E D R A

gres fine porcellanato

INDICE

index

02

CONCEPT

08

OLIMPIA

16

EFESO

22

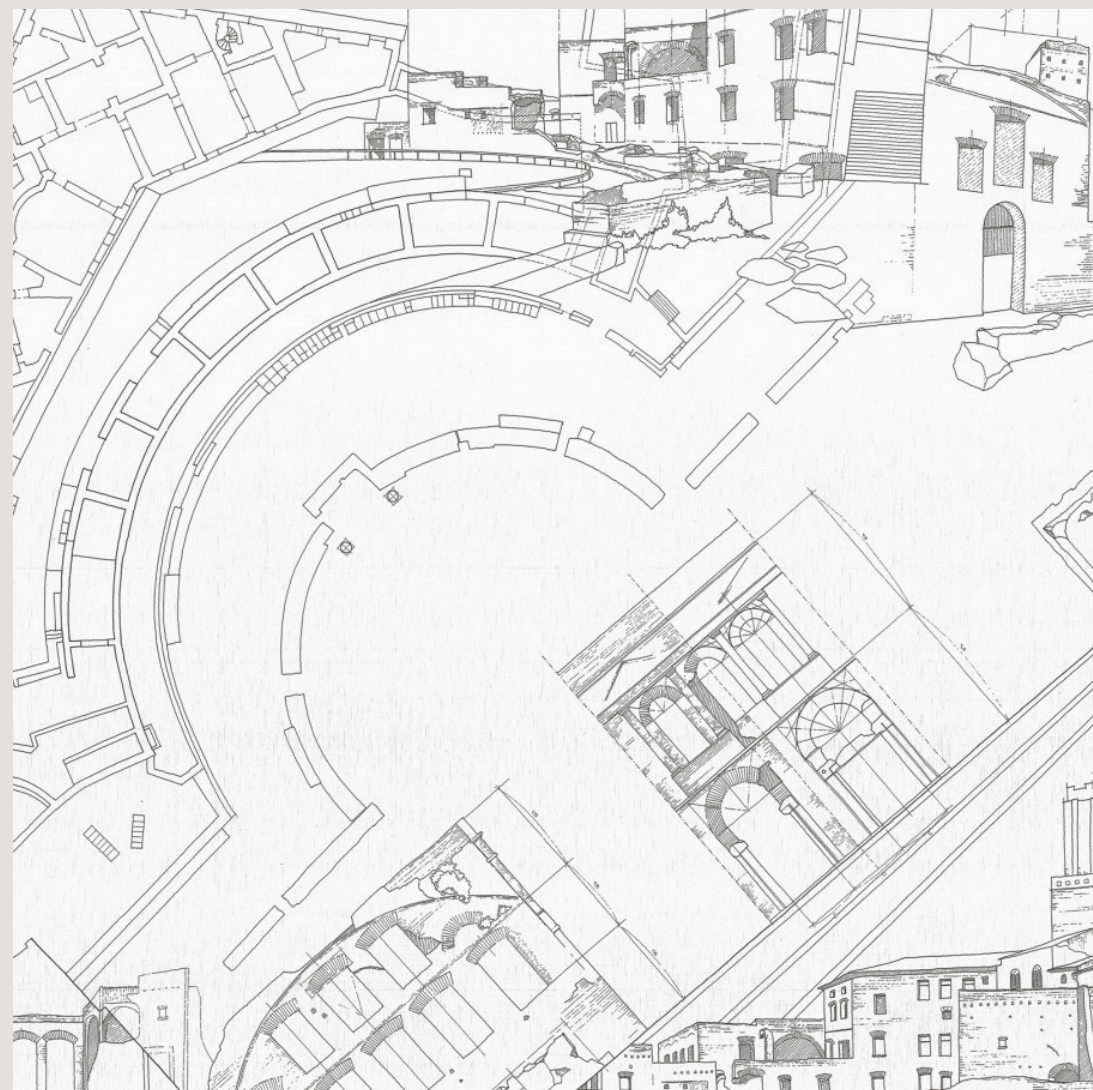
PERGAMO

28

DELFI



E S E D R A



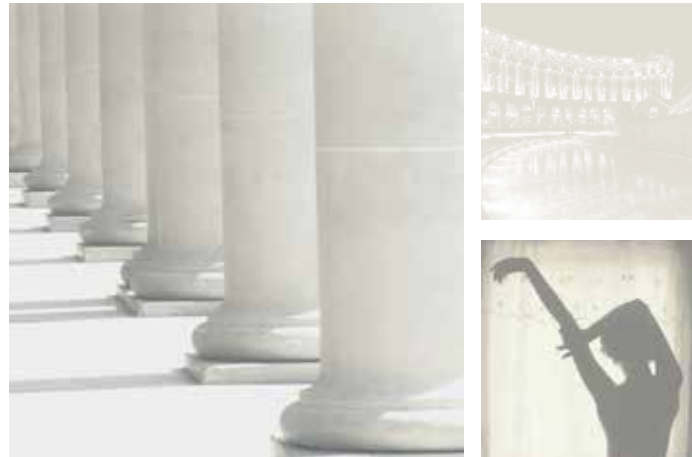
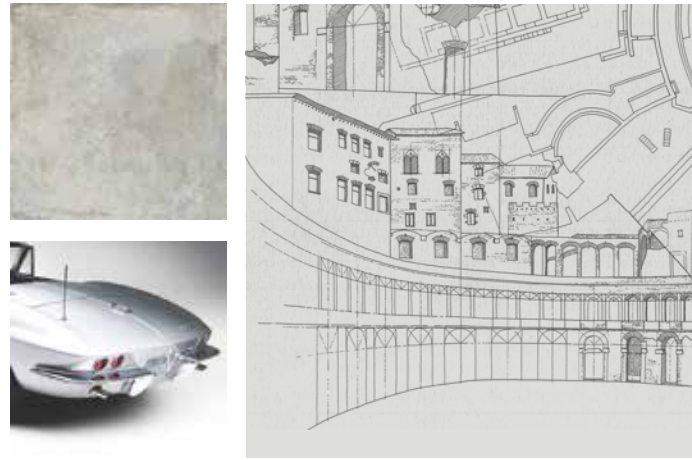
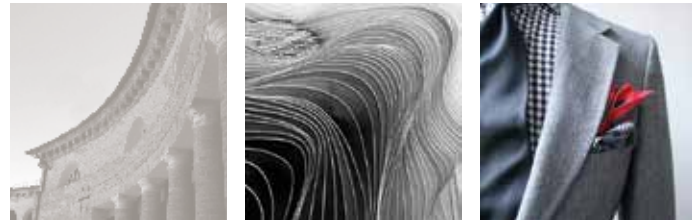
MATERIA CHE HA UNA STORIA DA RACCONTARE

Material with a story to tell

Esedra è la materia d'incontro tra stili che superano il tempo. Il suo bordo è mosso da delicate sbrecciature pur mantenendo la regolarità geometrica della lastra. L'espressività della superficie si arricchisce di movimenti grafici decisi e garbati al tempo stesso, che interpretano in modo inedito le venature calcaree del travertino. Una materia dallo stile forte, pensata, con i suoi colori ispirati alla natura, per caratterizzare i luoghi del vivere contemporaneo.

Esedra is the material that juxtaposes styles transcending time. Its edges are textured with delicate discontinuities that nonetheless maintain the geometric regularity of the piece. The expressiveness of the surface is enriched with decisive yet subtle motifs that innovatively reinterpret the grain of travertine. A material with a vigorous style, conceived with naturally inspired colours to assert spaces for contemporary living.

ESEDRA



CLASSICO E CONTEMPORANEO

Classical yet contemporary

Esedra: una magia che rende il tempo percorribile in "entrambe le direzioni". Oggetti e concetti che segnano un'epoca ma hanno l'energia per tornare attuali in momenti successivi. La bellezza che riesce ad oltrepassare i limiti del tempo. Quella vera. Esedra è tutto questo: materia che recupera il sapore delle antiche lastre sbrecciate dalla mano dell'uomo, un fondamentale architettonico che ha dato vita e carattere a tante piazze medioevali che si rinnova in superfici di incredibile attualità.

Esedra: a magic that allows time to be lived and enjoyed in both directions. Objects and concepts that trace a bygone era yet have the energy to bound back into the present. A beauty that manages to bypass the limits of time itself. The real definition of beauty. Esedra is all this: a material which reclaims the hand-chipped authenticity of yore, of the fundamental architecture that gave life and character to many a medieval square, yet which reinvents itself with stunningly contemporary timeliness.



SUPERFICIE NATURALE

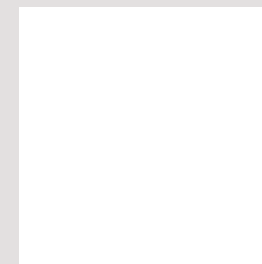
natural surface

1 BORDO NATURALE
1 natural edge

4 COLORI
4 colours



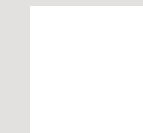
4 FORMATI
4 sizes



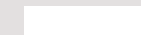
60x60
24"x24"



30x60
12"x24"



30x30
12"x12"



7,3x30
3"x12"



SUPERFICIE GRIP

grip surface

1 BORDO NATURALE
1 natural edge

3 COLORI
3 colours



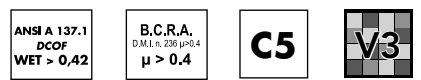
1 FORMATO
1 size



50x100
20"x40"



ESEDRA



OLIMPIA

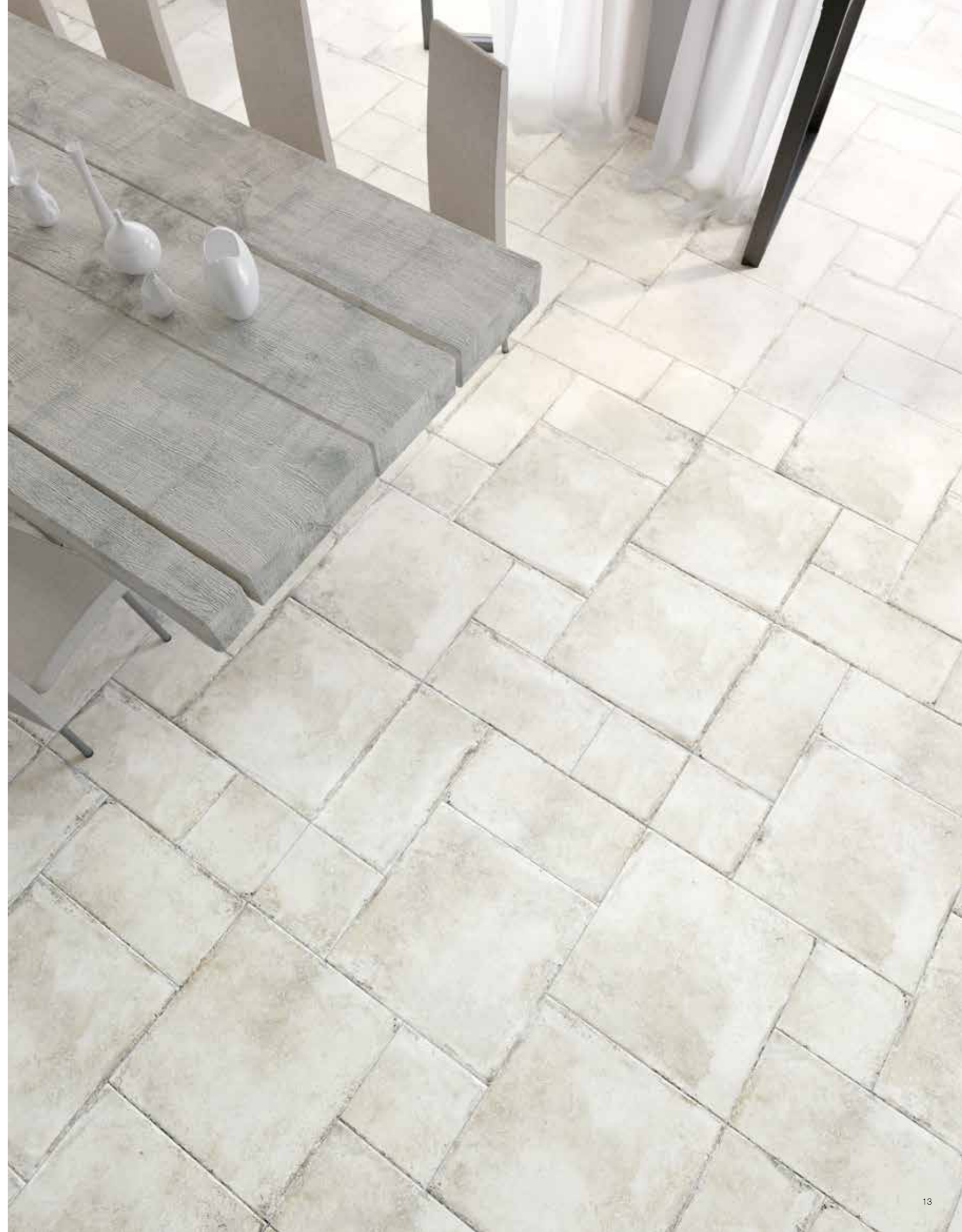
gres fine porcellanato
fine porcelain stoneware





Ambiente realizzato con: Olimpia 60x60 nat. - 30x60 nat. - 30x30 nat. - 50x100 grip
Setting realized with: Olimpia 60x60 nat. - 30x60 nat. - 30x30 nat. - 50x100 grip

OLIMPIA

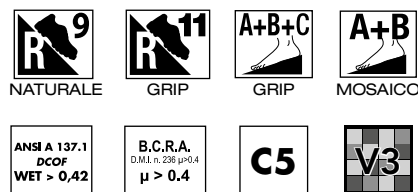
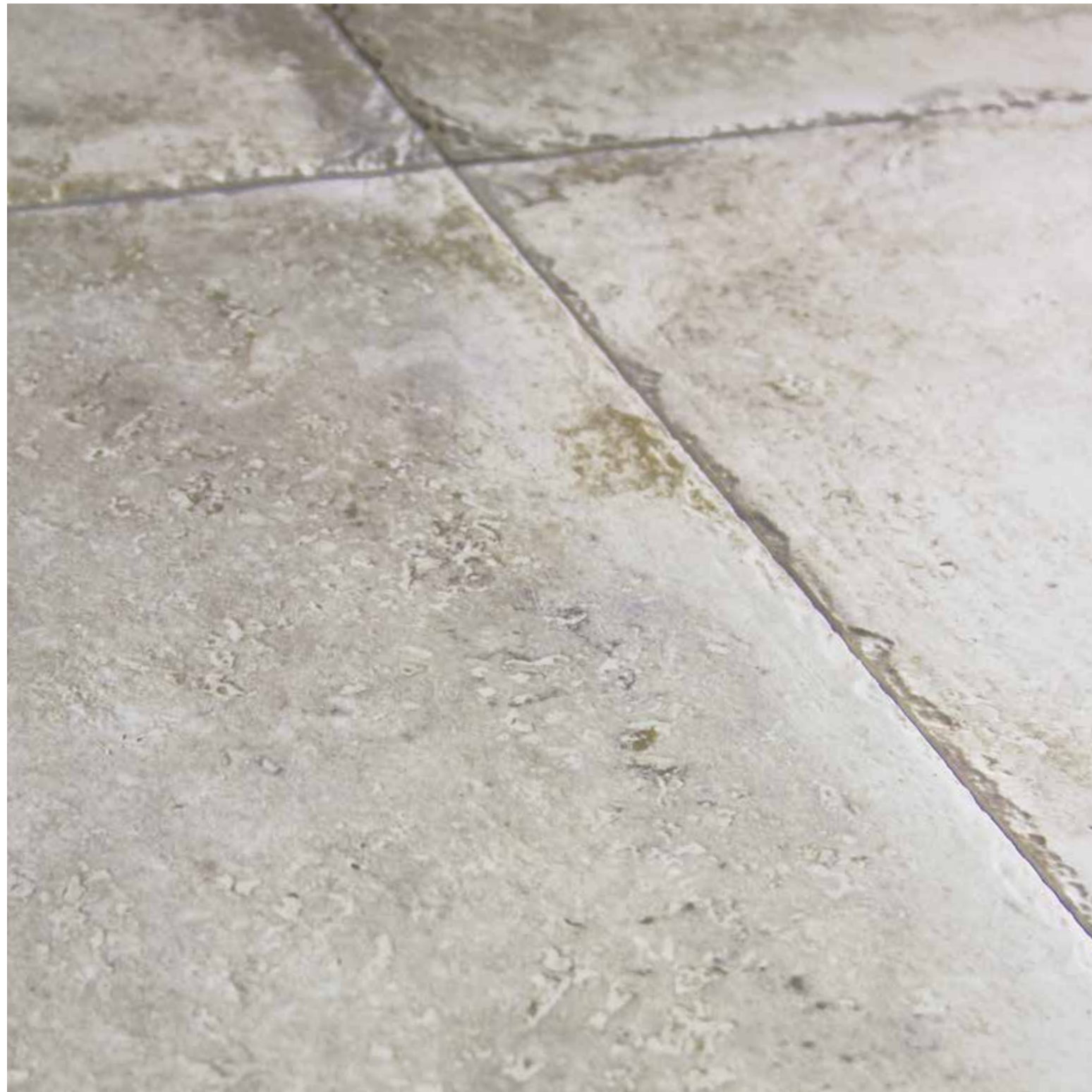




Ambiente realizzato con: Olimpia 50x100 grip
Setting realized with: Olimpia 50x100 grip

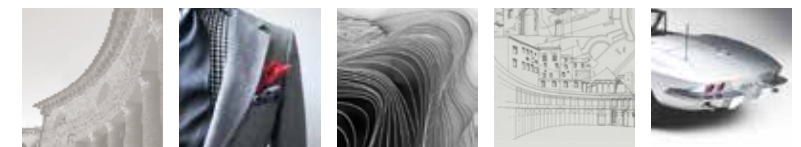
OLIMPIA
gres fine porcellanato
fine porcelain stoneware

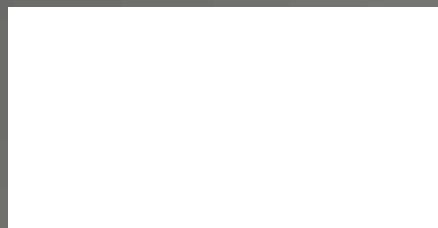




EFESO

gres fine porcellanato
fine porcelain stoneware



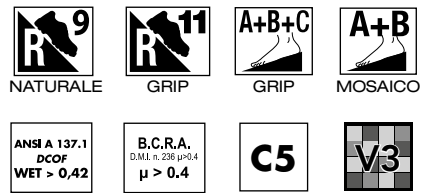
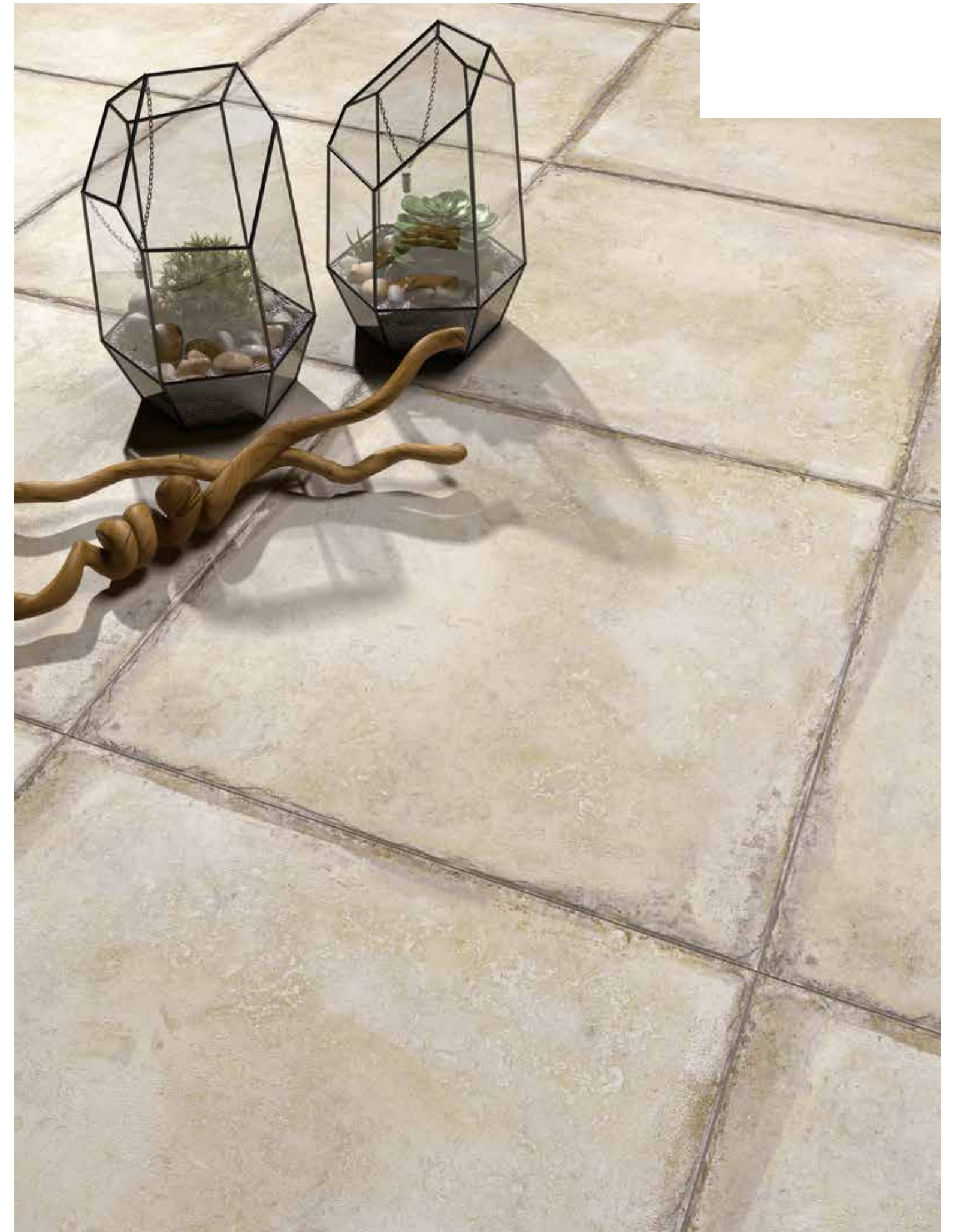
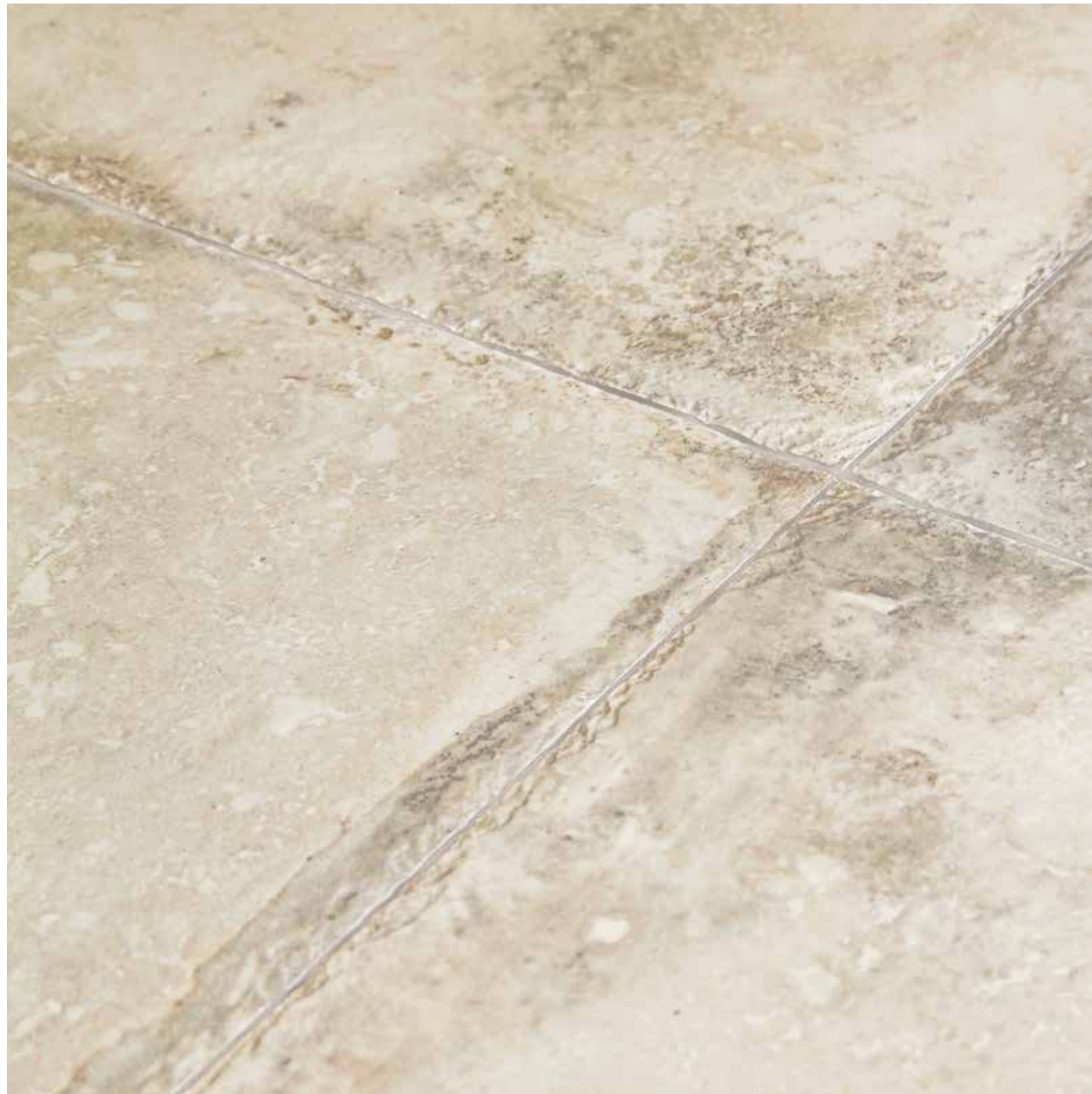


Ambiente realizzato con: Efeso 60x60 nat. - Mattoncino 7,3x30 nat.
Setting realized with: Efeso 60x60 nat. - Mattoncino 7,3x30 nat.

EFESO

gres fine porcellanato
fine porcelain stoneware





PERGAMO

gres fine porcellanato
fine porcelain stoneware



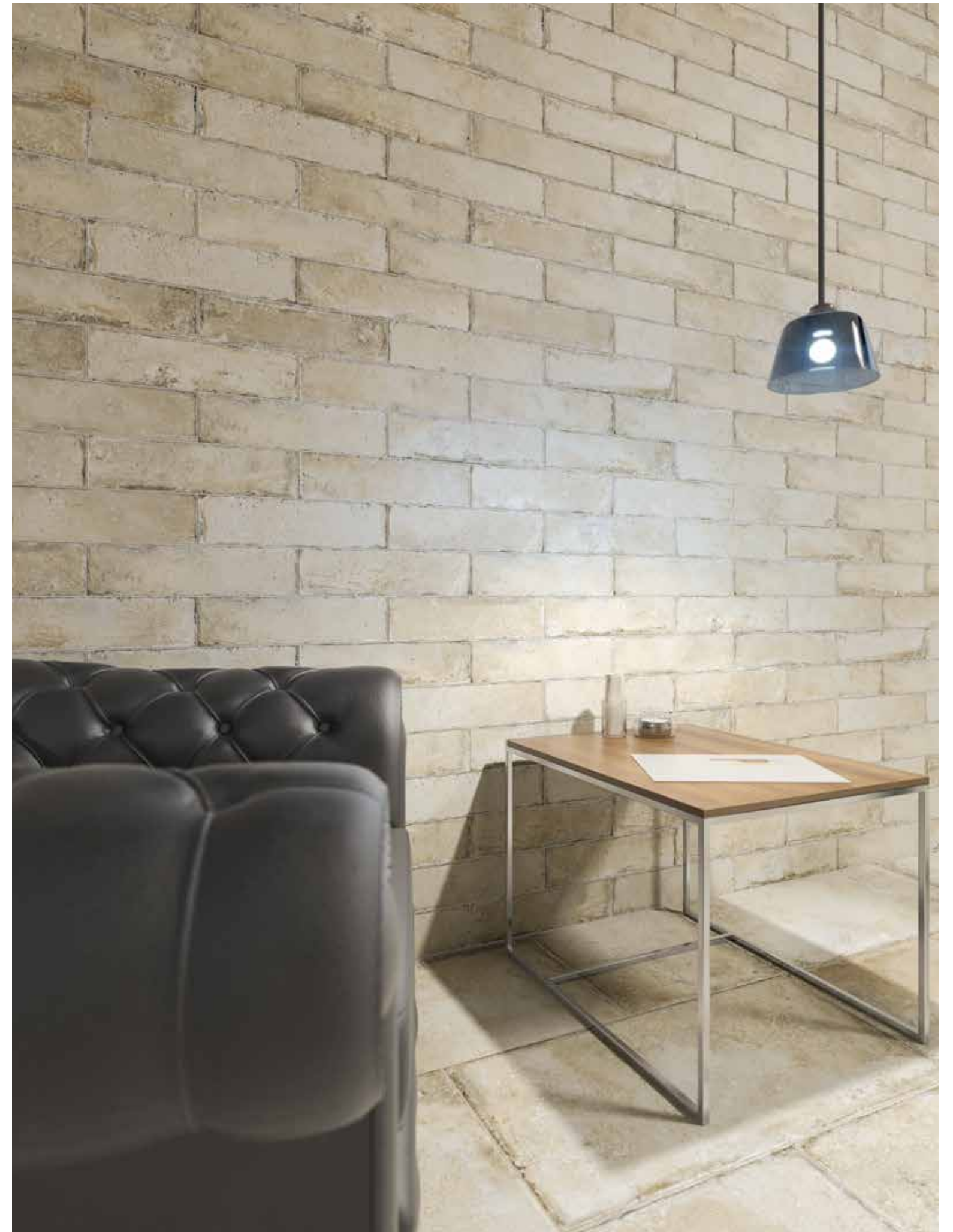


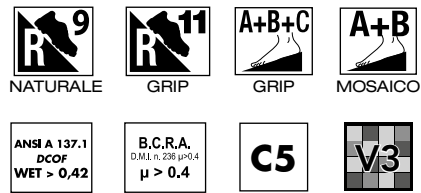
Ambiente realizzato con: Pergamo 60x60 nat. - 30x60 nat. - 30x30 nat. - Mattoncino 7,3x30 nat.
Setting realized with: Pergamo 60x60 nat. - 30x60 nat. - 30x30 nat. - Mattoncino 7,3x30 nat.



PERGAMO

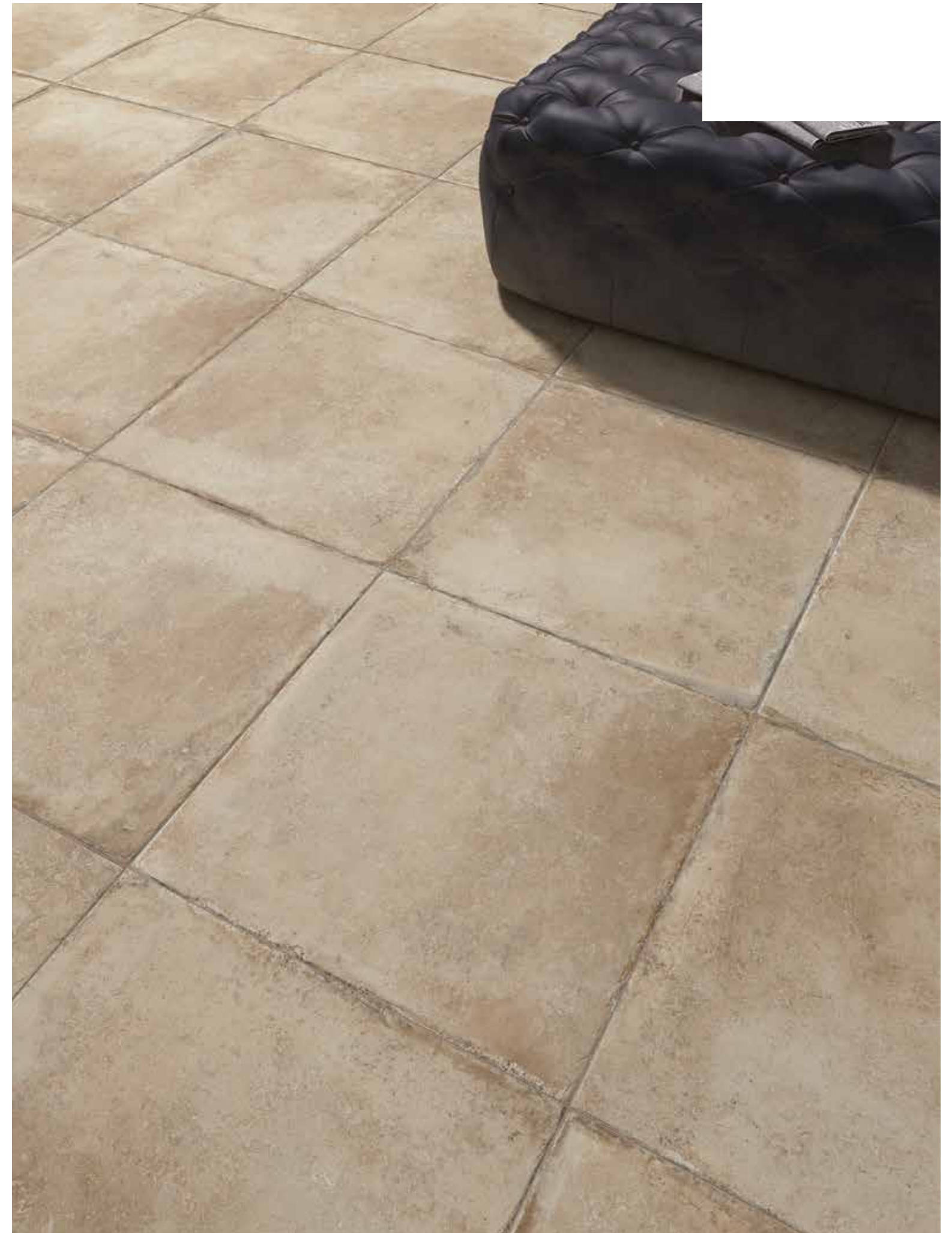
gres fine porcellanato
fine porcelain stoneware

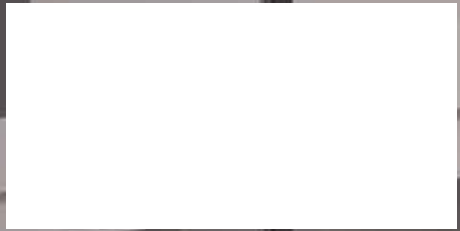




DELFI

gres fine porcellanato
fine porcelain stoneware





Ambiente realizzato con: Delfi 60x60 nat. - 30x60 nat. - Mosaico 4,7x4,7
Setting realized with: Delfi 60x60 nat. - 30x60 nat. - Mosaic 4,7x4,7



DELFI
gres fine porcellanato
fine porcelain stoneware





E S E D R A

gres fine porcellanato
fine porcelain stoneware



EFESO



OLIMPIA



PERGAMO



DELFI

SUPERFICIE NATURALE natural surface



60x60 - 24"x24" ∇ 10 mm

91512 Olimpia
91513 Pergamo
91514 Efeso
91515 Delfi

■ 93



30x60 - 12"x24" ∇ 10 mm

91508 Olimpia
91509 Pergamo
91510 Efeso
91511 Delfi

■ 81



30x30 - 12"x12" ∇ 10 mm

93030 Olimpia
93032 Pergamo
93029 Efeso
93027 Delfi

■ 75



7,3x30 - 3"x12" ∇ 10 mm
Mattoncino

91804 Olimpia
91805 Pergamo
91806 Efeso
91807 Delfi

■ 166

SUPERFICIE GRIP grip surface

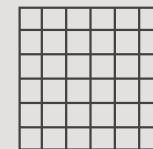


50x100 - 10"x40" ∇ 10 mm

91886 Olimpia
91887 Pergamo
91888 Efeso

■ 129

MOSAICI mosaics



4,7x4,7 - 1,8"x1,8"
Mosaico su rete burattato . 30x30 - 12"x12"

91701 Olimpia
91702 Pergamo
91700 Efeso
91699 Delfi

■ 193

PEZZI SPECIALI special pieces



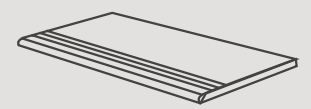
7,2x60 - 3"x24"
Battiscopa
naturale . natural

● 13



7,2x30 - 3"x12"
Battiscopa
naturale . natural

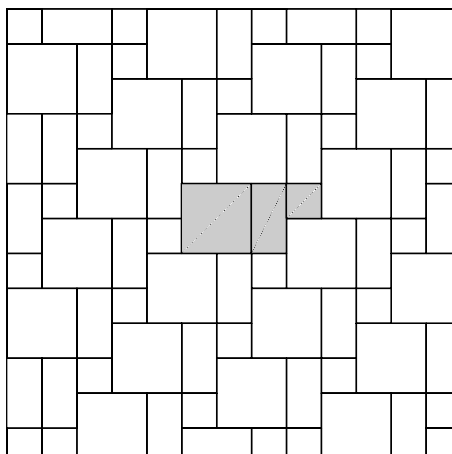
● 5






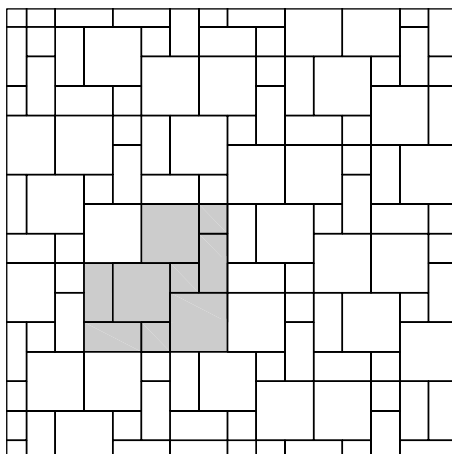
30x60 - 12"x24"
Gradino
naturale . natural

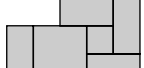

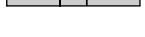
● 64

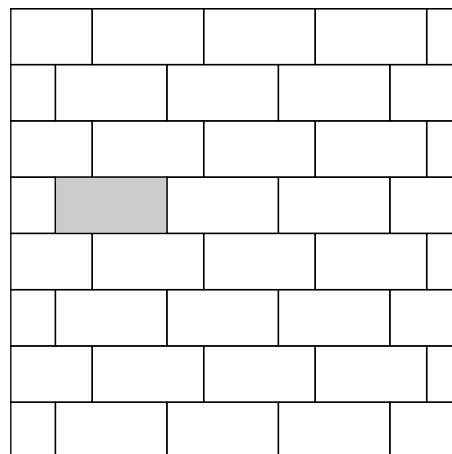
SCHEMI DI POSA how to lay




	60x60	57,1%
	30x60	28,6%
	30x30	14,3%



	60x60	57,1%
	30x60	28,6%
	30x30	14,3%



	50x100	100%
---	--------	------

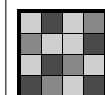
VARIAZIONI CROMATICHE colours variations



V1 Aspetto uniforme
Even appearance



V2 Lieve variazione
Light variation



V3 Media variazione
Medium variation



V4 Intensa variazione
Strong variation

È indispensabile all'atto della posa, prelevare le piastrelle da più confezioni.

It is necessary to take the tiles from several different boxes when laying them.

CATEGORIE D'IMPIEGO use classes



C1 Piastrelle da pavimento consigliate per traffico leggero
Floor tiles recommended for light traffic



C2 Piastrelle da pavimento consigliate per traffico medio-leggero
Floor tiles recommended for medium-light traffic



C3 Piastrelle da pavimento consigliate per traffico medio
Floor tiles recommended for medium traffic



C4 Piastrelle da pavimento consigliate per traffico medio-pesante
Floor tiles recommended for medium-heavy traffic



C5 Piastrelle da pavimento consigliate per impieghi con forti sollecitazioni
Floor tiles recommended for highly stressed uses


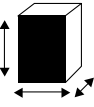

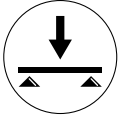
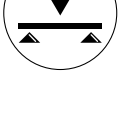


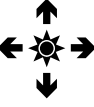



IMBALLI packaging



	60x60	50x100	30x60	30x30 mosaico	30x30	7,3x30 mattoncino
Pc.	3	2	6	11	13	46
M ²	1,08	1	1,08	1	1,17	1,007
Kg	23	21	22,50	20,3	22	20,5



	60x60	50x100	30x60	30x30 mosaico	30x30	7,3x30 mattoncino
Colli boxes	40	48	48	36	50	60
M ²	43,2	48	51,84	36	58,5	60,42
Kg	920	1008	1080	730,8	1100	1230

 NAXOS <small>FINCIBEC GROUP</small> ISO 13006B1a EN 14411/G	CARATTERISTICHE TECNICHE TECHNICAL DATA CARACTÉRISTIQUES TECHNIQUES TECHNISCHE DATEN CARACTERÍSTICAS TÉCNICAS	TIPO DI PROVA STANDARD OF TEST NORME DU TEST TESTNORM TIPO DE PRUEBA	VALORE NAXOS NAXOS STANDARDS VALEUR NAXOS ERGEBNIS NAXOS VALOR DE NAXOS
	DIMENSIONI SIZES DIMENSIONS ABMESSUNGEN DIMENSIONES	ISO 10545.2	A NORMA ACCORDING TO NORM SELON LA NORME NACH NORM CONFORME
	ASSORBIMENTO D'ACQUA WATER ABSORPTION ABSORPTION D'EAU WASSERAUFNAHME ABSORCIÓN DEL AGUA	ISO 10545.3	$\leq 0,2\%$
	SFORZO DI ROTTURA MODULUS OF RUPTURE EFFORT DE RUPTURE BRUCHLAST ESFUERZO DE ROTURA	ISO 10545.4	$S \geq 1300 \text{ N}$
	RESISTENZA A FLESSIONE BREAKING STRENGTH RESISTANCE A LA FLEXION BIEGEFESTIGKEIT RESISTENCIA A LA FLEXIÓN		$R \geq 35 \text{ N/MM}^2$
	RESISTENZA AGLI SHOCK TERMICI RESISTANCE TO THERMAL SHOCK RESISTANCE AUX CHOQUES THERMIQUE TEMPERATURWECHSELBESTÄNDIGKEIT RESISTENCIA A LOS CAMBIOS TÉRMICOS	ISO 10545.9	GARANTITA GUARANTEED GARANTIE GARANTIERT GARANTIZADA
	RESISTENZA AL GELO FROST RESISTANCE RESISTANCE AU GEL FROSTBESTÄNDIGKEIT RESISTENCIA A LA HELADA	ISO 10545.12	GARANTITA GUARANTEED GARANTIE GARANTIERT GARANTIZADA
	COEFFICIENTE DI DILATAZIONE TERMICA LINEARE THERMAL EXPANSION COEFFICIENT COEFFICIENT DE DILATATION THERMIQUE LINEARE WÄRMEAUSDEHNUNGSKOEFFIZIENT COEFICIENTE DE DILATACIÓN TERMICA LINEAR	ISO 10545.8	A NORMA ACCORDING TO NORM SELON LA NORME NACH NORM CONFORME
	RESISTENZA ALL'ATTACCO CHIMICO CHEMICAL RESISTANCE RESISTANCE CHIMIQUE BESTÄNDIGKEIT GEGEN CHEMICALIEN RESISTENCIA AL ATAQUE QUIMICO	ISO 10545.13	A NORMA ACCORDING TO NORM SELON LA NORME NACH NORM CONFORME
	RESISTENZA ALLE MACCHIE STAINS RESISTANCE RESISTANCE AUX TACHES FLECKENBESTÄNDIGKEIT RESISTENCIA A LAS MANCHAS	ISO 10545.14	A NORMA ACCORDING TO NORM SELON LA NORME NACH NORM CONFORME
	RESISTENZA ALLO SCIVOLAMENTO SLIP RESISTANCE RESISTANCE AU GLISSEMENT RUTSCHFESTIGKEIT RESISTENCIA AL DESLIZAMIENTO	ANSI A 137.1 - DCOF (Coefficiente di attrito dinamico) (Coefficient of kinetic friction) B.C.R.A. (D.M. 236 $\mu > 0.4$) DIN 51130 DIN 51097	$WET > 0,42 \text{ NAT. GRIP}$ CUOIO ASCIUTTO $\mu > 0.4 \text{ NAT. GRIP}$ DRY LEATHER GOMMA BAGNATA $\mu > 0.4 \text{ NAT. GRIP}$ WET RUBBER R9 NAT. R11 GRIP A+B+C GRIP A+B MOSAICO

Escluso pezzi speciali ed elementi decorativi With the exception of special pieces and decors
 Per ulteriori informazioni consultare le schede tecniche dal sito www.naxos-ceramica.it For further inquiries, refer to the data sheets on the web-site www.naxos-ceramica.it

Note Notes

I prodotti possono essere modificati da Fincibec senza preavviso, respingendo ogni responsabilità su possibili danni diretti o indiretti causati da potenziali modifiche.
 Fincibec reserves the right to modify its products without prior notice and cannot be held liable for direct or indirect damage caused by such modifications.

Verificare sempre la correttezza delle informazioni e dei dati relativi a codici, imballaggi e pesi, consultando il listino prezzi in vigore.
 Always refer to the price list in force to ensure correct information and data on codes, packaging, and weight.

Le tonalità dei colori riportate nel catalogo sono indicative.
 The colours shades, reported on the catalogue, are indicative.



**RECYCLED
CONTENT**



CE
EN 14411