

# LeMaraais



# LeMarais

Rivestimenti in pasta bianca  
White body wall tiles

# indice

index

4  
concept  
concept



12  
ambienti  
settings



30  
codici  
codes



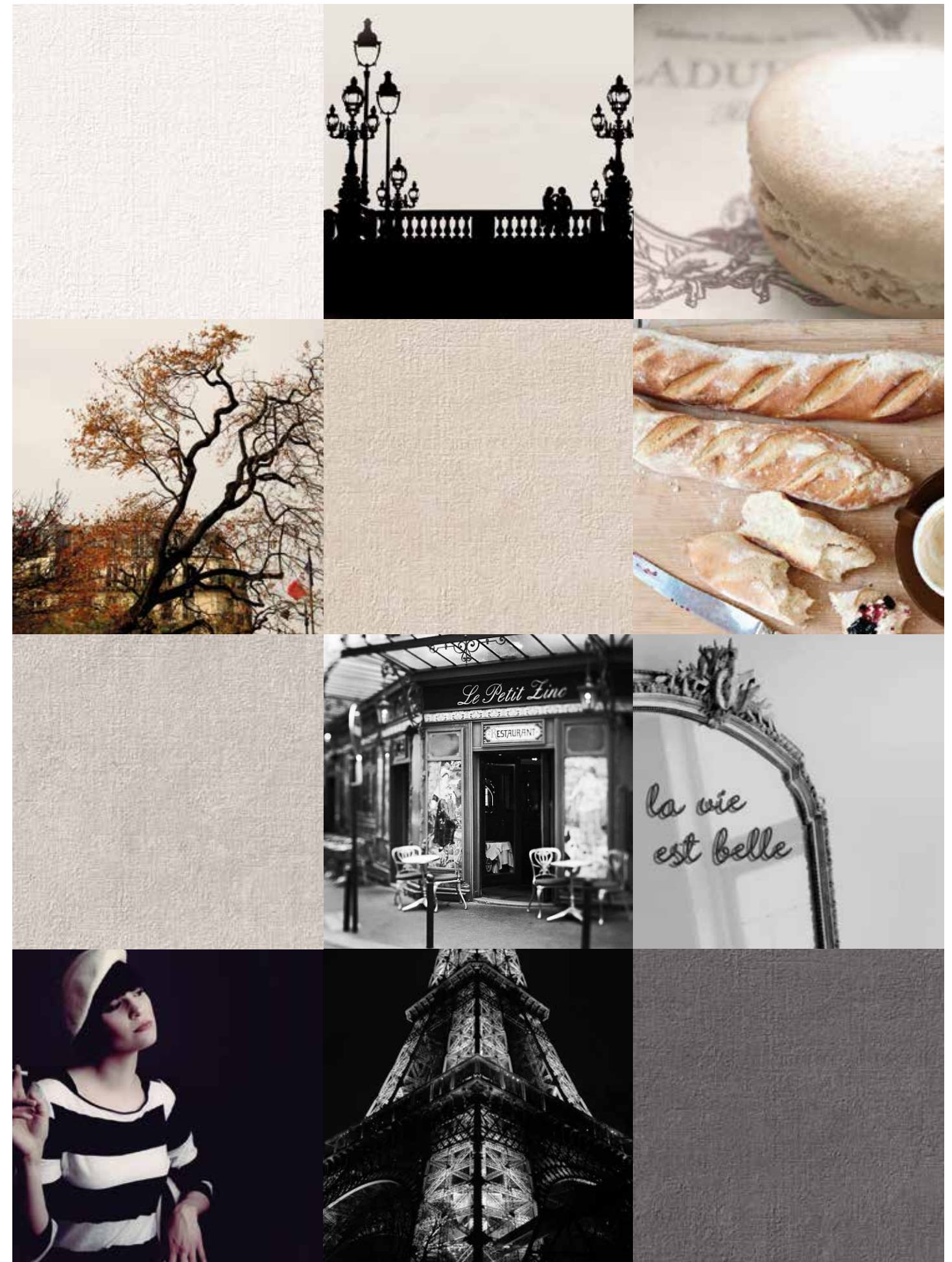
33  
tabelle  
tables



LeMarais

# emozioni da abitare

emotions for your home







# seducente materia

*seductive material*

Le Marais, uno dei quartieri più autentici di Parigi, dove le strutture architettoniche hanno superato indenni le vicende storiche e politiche della storia Francese. È il cuore della Parigi dei bistrot, delle piccole botteghe piene di oggetti curiosi, dei café dove un tempo si incontravano artisti provenienti da discipline anche molto diverse tra loro. È qui che nacquero correnti avanguardiste nella pittura, scultura, musica e letteratura. Un luogo magico ancora oggi, simbolo delle tendenze stilistiche più moderne, ma sempre attente agli equilibri estetici del passato. La collezione Le Marais interpreta questa suggestione, tra passato e contemporaneo, proponendo una materia che ama farsi scoprire giorno per giorno, una superficie discreta che racconta sé stessa attraverso emozioni più tattili che visive.

Le Marais, one of the most authentic areas in Paris, where architectural structures have passed through historical and political events of French history unscathed. This is the heart of the town's area with its bistros, small shops full of unusual items and cafés where once artists from very different domains used to meet up. This is where avant-garde in the fields of painting, sculpture, music and literature began. A place that still retains its magic, a symbol of the latest trends in terms of style and yet always aware of the aesthetic balances of the past. The Le Marais collection interprets this suggestion, between the past and contemporary world by offering a material that reveals itself day by day, a discrete surface that describes itself through tactile and visual emotions.

LeMarais

# colori puri e semplici

*pure and simple colours*

I colori sono sobri, tendenzialmente neutri, distribuiti con leggere sfumature di tono su una superficie dal rilievo morbido, che racconta un cemento ceramico elegante e garbato. È materia contemporanea per la sua discrezione, pensata per dialogare con le direzioni più ricercate dell'odierno design d'interni. Ha un ruolo di primo piano nello sviluppo dell'arredo abitativo con toni cromatici che si dimostrano sempre complementari alle scelte di chi ama, ed abita, il proprio spazio. Per le sue caratteristiche, Le Marais di Naxos ha ottenuto la certificazione ANAB-ICEA e si presta a realizzazioni di bioedilizia.

The colours are soft, basically neutral, distributed with slight shade nuances on a soft surface that reveals an elegant and pleasant ceramic cement. It is a contemporary material thanks to its discreet nature, designed to communicate with the most sophisticated trends of modern interior design. It has a leading role in the development of home furniture with colours that always complete the choices of those who love, and enjoy, their own spaces. Thanks to its features, Le Marais by Naxos obtained the ANAB-ICEA certification and can be used for green building projects.

piombo grey ecrù milk





# dettagli di luce

*light details*

Le numerose proposte decorative danno alla collezione Le Marais motivo di ulteriore espressività, giochi di lustri madreperlato che giocano con l'austerità dei fondi, tavole con movimenti a rilievo sempre diversi e inaspettati, geometrie rigorose per sottolineare alcune zone dello spazio-casa, mosaici dalle cromie vivaci ma omogenee, riflettenti, incastonate da tessere policrome che sviluppano vibrazioni luminose decisamente interessanti.

The many decorative solutions make the Le Marais collection even more expressive, pearly, glossy effects against the austerity of backgrounds, hollow tiles with irregular and unexpected reliefs, rigorous geometrical patterns to highlight some areas of the house, mosaics by bright and yet even, reflective colour schemes but homogeneous, set in multicoloured tiles that develop very interesting luminous vibrations.





Ambiente realizzato con: . Setting realized with:  
Le Marais Milk 26x60,5 . Le Marais Piombo 26x60,5 . Tavella Mix Le Marais Piombo 8,5x60,5 . List. Vitra Piombo 5x60,5 . Spaccatella Perlage Piombo 30x30  
Crystal Piombo pav. nat. 60x60 . Mosaico Piombo 30x30



LeMarais

milk  
piombo







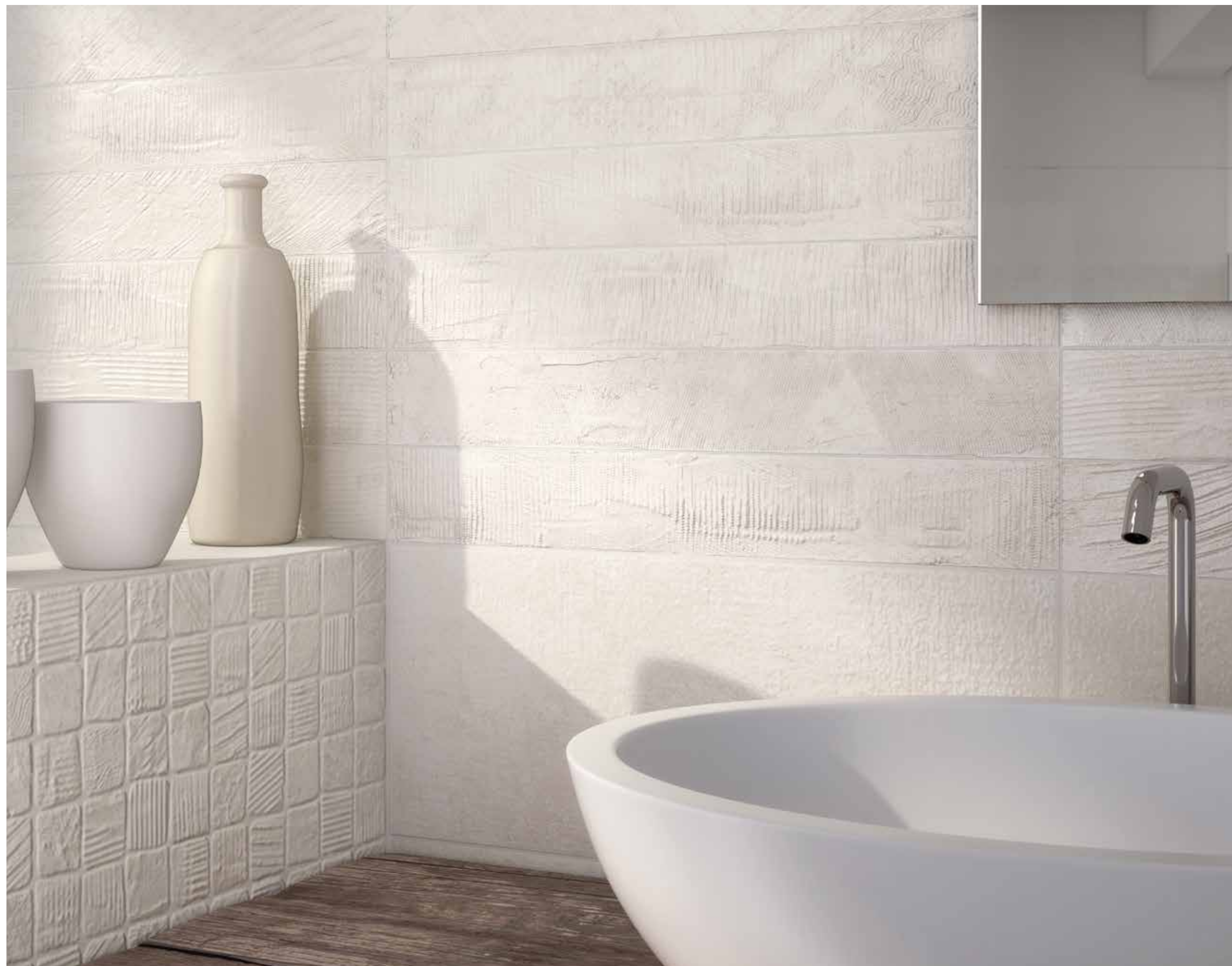
milk  
piombo







Ambiente realizzato con: . Setting realized with:  
Le Marais Milk 26x60,5 . Le Marais Ecrù 26x60,5 . Tavella Mix Le Marais Milk 8,5x60,5 . Mosaico Le Marais Milk 26x60,5 . Bricks Le Marais Ecrù 26x26  
Crystal Terra pav. nat. 60x60



milk  
ecrú







Ambiente realizzato con: . Setting realized with:  
Le Marais Milk 26x60,5 . Le Marais Grey 26x60,5 . Tavella Mix Le Marais Grey 8,5x60,5 . List. Vitra Grey 5x60,5  
Crystal Grey pav. nat. 60x60



milk  
grey





LeMarais

milk  
ecrù



Ambiente realizzato con: . Setting realized with:  
Le Marais Milk 26x60,5 . Tavella Mix Le Marais Ecrù 8,5x60,5

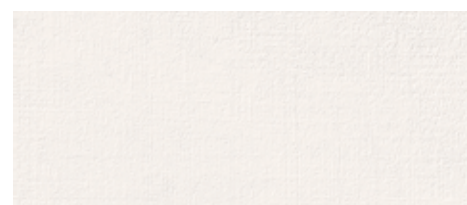


Ambiente realizzato con: . Setting realized with:  
Mosaico Le Marais Milk 26x60,5

milk







26x60,5 **88**  
73534 Le Marais Milk



8,5x60,5 **149**  
75086 Tavella Mix Le Marais Milk



30x30 **111**  
75109 Spaccatella Perlage Milk



26x26 **24**  
75105 Bricks Le Marais Milk



5x60,5 **62**  
75091 List. Vitra Milk



26x60,5 **105**  
74915 Mosaico Le Marais Milk



26x60,5 **88**  
74526 Le Marais Ecrù



8,5x60,5 **149**  
75088 Tavella Mix Le Marais Ecrù



30x30 **111**  
75111 Spaccatella Perlage Ecrù



26x26 **24**  
75106 Bricks Le Marais Ecrù



5x60,5 **62**  
75093 List. Vitra Ecrù



26x60,5 **97**  
73535 Le Marais Grey



8,5x60,5 **160**  
75089 Tavella Mix Le Marais Grey



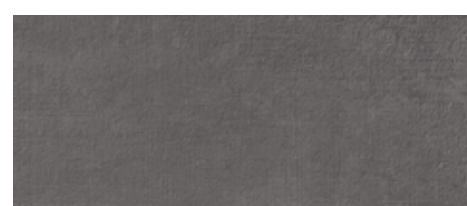
30x30 **111**  
75112 Spaccatella Perlage Grey



26x26 **24**  
75107 Bricks Le Marais Grey



5x60,5 **62**  
75094 List. Vitra Grey



26x60,5 **97**  
73536 Le Marais Piombo



8,5x60,5 **160**  
75090 Tavella Mix Le Marais Piombo



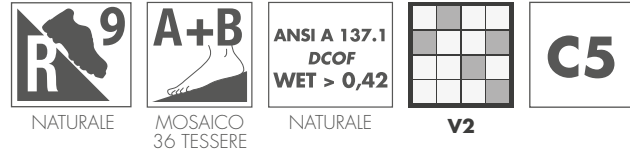
30x30 **111**  
75113 Spaccatella Perlage Piombo



26x26 **24**  
75108 Bricks Le Marais Piombo



5x60,5 **62**  
75092 List. Vitra Piombo



## Pavimenti in gres porcellanato fine (ISO 13006 BIa)

Fine porcelain stoneware floor tiles

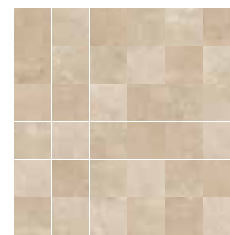
Per ulteriori informazioni consultare le schede tecniche dal sito [www.naxos-ceramica.it](http://www.naxos-ceramica.it)  
For any further inquiries, refer to the data sheets on the web-site [www.naxos-ceramica.it](http://www.naxos-ceramica.it)



60x60  
**68179** Crystal Terra pav. nat. ■ 97 R9



30x30 ( 20 tessere )  
**69716** Mosaico muretto Terra ● 35



30x30 ( 36 tessere )  
**75526** Mosaico Terra ● 30



60x60  
**68181** Crystal Grey pav. nat. ■ 97 R9



30x30 ( 20 tessere )  
**69718** Mosaico muretto Grey ● 35



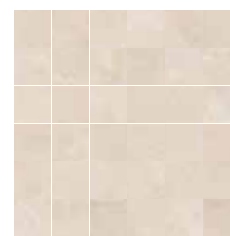
30x30 ( 36 tessere )  
**75528** Mosaico Grey ● 30



60x60  
**68180** Crystal Ecrù pav. nat. ■ 97 R9



30x30 ( 20 tessere )  
**69717** Mosaico muretto Ecrù ● 35



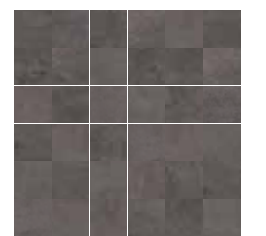
30x30 ( 36 tessere )  
**75589** Mosaico Ecrù ● 30



60x60  
**68182** Crystal Piombo pav. nat. ■ 97 R9

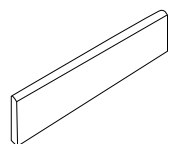


30x30 ( 20 tessere )  
**69719** Mosaico muretto Piombo ● 35

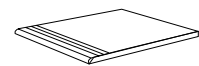


30x30 ( 36 tessere )  
**75529** Mosaico Piombo ● 30

### Pezzi speciali Special pieces



7,2x60  
**Battiscopa naturale** ● 13



60x60  
**Gradino naturale** ● 84

### Note

Notes

I prodotti possono essere modificati da Fincibec senza preavviso, respingendo ogni responsabilità su possibili danni diretti o indiretti causati da potenziali modifiche.  
Fincibec reserves the right to modify its products without prior notice and cannot be held liable for direct or indirect damage caused by such modifications.

Verificare sempre la correttezza delle informazioni e dei dati relativi a codici, imballaggi e pesi, consultando il listino prezzi in vigore.  
Always refer to the price list in force to ensure correct information and data on codes, packaging, and weight.

Le tonalità dei colori riportate nel catalogo sono indicative.  
The colours shades, reported on the catalogue, are indicative.

### Variazioni cromatiche Colour variations



**V1** Aspetto uniforme  
Even appearance



**V2** Lieve variazione  
Light variation



**V3** Media variazione  
Medium variation



**V4** Intensa variazione  
Strong variation

### Categorie d'impiego Use classes

Use classes



**C1** Piastrelle da pavimento consigliate per calpestio leggero  
Floor tiles recommended for light traffic



**C2** Piastrelle da pavimento consigliate per calpestio medio-leggero  
Floor tiles recommended for medium-light traffic



**C3** Piastrelle da pavimento consigliate per calpestio medio  
Floor tiles recommended for medium traffic



**C4** Piastrelle da pavimento consigliate per calpestio medio-pesante  
Floor tiles recommended for medium-heavy traffic



**C5** Piastrelle da pavimento consigliate per calpestio intenso  
Floor tiles recommended for high traffic use

È indispensabile all'atto della posa, prelevare le piastrelle da più confezioni.  
It is necessary to take the tiles from several different boxes when laying them.



# CARATTERISTICHE TECNICHE / PASTA BIANCA

TECHNICAL SPECIFICATIONS / PORCELAIN STONWARE - TECHNISCHE EIGENSCHAFTEN / FEINSTEINZEUG - CARACTÉRISTIQUES TECHNIQUES / GRÈS FIN CÉRAME  
 CARACTERÍSTICAS TÉCNICAS / GRES FINO PORCELÁNICO - ТЕХНИЧЕСКИЕ ХАРАКТЕРИСТИКИ / МЕЛКОЗЕРНИСТЫЙ КЕРАМОГРАНИТ

STANDARDS : UNI EN 14411 ANNEX G - Bla / UNI EN ISO 13006 ANNEX G - Bla

	CARATTERISTICHE TECNICHE TECHNICAL DATA TECHNISCHE DATEN CARACTÉRISTIQUES TECHNIQUES CARACTERÍSTICAS TÉCNICAS ТЕХНИЧЕСКИЕ ХАРАКТЕРИСТИКИ	TIPO DI PROVA STANDARD OF TEST NORME DU TEST TESTINORM TIPO DE PRUEBA ТИП ТЕСТА	VALORI/PRESCRITTI DALLA NORME INTERNATIONAL STANDARDS INTERNATIONALE NORMWERTE VALEURS PRÉVUES PAR LES NORMES VALORES PREVISTOS POR LAS NORMAS ПРЕДУСМОТРЕННЫЕ СТАНДАРТОМ		VALORE MEDIANO X NAXOS AVERAGE VALLE NAXOS MITTELWERT VALEURS MOYENNES X VALOR MEDIO X СРЕДНЕЕ ЗНАЧЕНИЕ X
			REQUIREMENTS FOR NOMINAL SIZE N		
	MASSEIGENSCHAFTEN - DETERMINATION DES CARACTÉRISTIQUES DIMENSIONELLES CARACTERÍSTICAS DIMENSIONALES - PAZMERHIE XAPAKTEPCTIKИ		7 cm ≤ N ≤ 15 cm	N ≥ 15 cm	MATT
	<b>LATI</b> SIDES - SEITEN COTES - CANTOS РАЗМЕРЫ СТОРОН	EN ISO 10545-2	± 0,9 mm	± 0,6% (± 2,0 mm)	CONFORME COMPLYING - ERFÜLLT CONFORME - CONFORME COOTBETCTBYET
	<b>SPESSORE</b> THICKNESS - DICKE ÉPAISSEUR - ESPESOR ТОЛЩИНА	EN ISO 10545-2	± 0,5 mm	± 5,0% (± 0,5 mm)	CONFORME COMPLYING - ERFÜLLT CONFORME - CONFORME COOTBETCTBYET
	<b>RETTILINEITÀ DEGLI SPIGOLI</b> STRAIGHTNESS OF SIDES - GERADLINIGKEIT DER KANTEN RECTITUDE DES ARETES - RECTITUD DE LOS CANTOS - КОСОУГОЛЬНОСТЬ	EN ISO 10545-2	± 0,75 mm	± 0,5% (± 1,5 mm)	CONFORME COMPLYING - ERFÜLLT CONFORME - CONFORME COOTBETCTBYET
	<b>ORTOGONALITÀ</b> RECTANGULARITY - RECHTWINKLIGKEIT PERPENDICULARITÉ - ORTOGONALIDAD КРЯВИЗНА СТОРОН	EN ISO 10545-2	± 0,75 mm	± 0,5% (± 2 mm)	CONFORME COMPLYING - ERFÜLLT CONFORME - CONFORME COOTBETCTBYET
	<b>PLANARITÀ</b> SURFACE FLATNESS - EBENFLÄCHIGKEIT PLANEITE DE SURFACE - PLANEIDAD КРЯВИЗНА ЛИЦЕВОЙ ПОВЕРХНОСТИ	EN ISO 10545-2	± 0,75 mm	± 0,5% (± 2,0 mm)	CONFORME COMPLYING - ERFÜLLT CONFORME - CONFORME COOTBETCTBYET
	<b>ASSORBIMENTO D'ACQUA</b> WATER ABSORPTION - WASSERAUFNAHME ABSORPTION D'EAU - ABSORCIÓN DE AGUA ВОДОПОГЛОЩЕНИЕ	EN ISO 10545-3	≤ 0,5 %		≤ 0,1 %
	<b>RESISTENZA ALLA FLESSIONE</b> FLEXION RESISTANCE - BIEGEFESTIGKEIT RESISTANCE A LA FLEXION - RESISTENCIA A LA FLEXIÓN ПРЕДЕЛ ПРОЧНОСТИ ПРИ ИЗГИБЕ	EN ISO 10545-4	S ≥ 1.300 N R ≥ 35 N/mm <sup>2</sup>		CONFORME COMPLYING - ERFÜLLT CONFORME - CONFORME COOTBETCTBYET
	<b>RESISTENZA ALL'URTO</b> IMPACT RESISTANCE - STOSSFESTIGKEIT RESISTANCE AUX CHOCS - RESISTENCIA A LOS GOLPES УДАРОСТОЙКОСТЬ	EN ISO 10545-5	VALORE DICHIARATO DECLARED VALUE - ANGEBEBENER WERT VALEUR DÉCLARÉE - VALOR DECLARADO - ЗАЯВЛЕННОЕ ЗНАЧЕНИЕ		> 0,80
	<b>RESISTENZA ALL'ABRASIONE</b> ABRASION RESISTANCE - ABRIEBFESTIGKEIT RÉSISTANCE À L'ABRASION - RESISTENCIA A LA ABRASIÓN ПРОЧНОСТЬ НА ИСТИРАНИЕ	EN ISO 10545-6	≤ 175 mm <sup>3</sup>		CONFORME COMPLYING - ERFÜLLT CONFORME - CONFORME COOTBETCTBYET
	<b>COEFFICIENTE DI DILATAZIONE TERMICA LINEARE</b> COEFFICIENT OF LINEAR THERMAL EXPANSION - LINEARER WÄRMEAUDEHNUNGSKOEFFIZIENT COEFFICIENT DE DILATION THERMIQUE LINEAIRE - COEFFICIENT DE DILATACIÓN TÉRMICA LINEAL КОЭФФИЦИЕНТ ЛИНЕЙНОГО ТЕРМИЧЕСКОГО РАСТЯЖЕНИЯ	EN ISO 10545-8	VALORE DICHIARATO DECLARED VALUE - ANGEBEBENER WERT VALEUR DÉCLARÉE - VALOR DECLARADO - ЗАЯВЛЕННОЕ ЗНАЧЕНИЕ		α = 6,7 × 10 <sup>-6</sup> / °C
	<b>RESISTENZA AGLI SBALZI TERMICI</b> RESISTANCE TO THERMAL SHOCKS - BESTÄNDIGKEIT GEGEN TEMPERATURSCHWANKUNGEN RESISTANCE AUX CHOCS THERMIQUES - RESISTENCIA A LOS CHOQUES TÉRMICOS СТОЙКОСТЬ К ПЕРЕПАДАМ ТЕМПЕРАТУРЫ	EN ISO 10545-9	TEST SUPERATO SECONDO EN ISO 10545-1 TEST PASSED ACCORDING TO - TEST BESTANDEN NACH TEXTE DÉPASSÉ SELON - PRUEBA SUPERADA SEGÚN ИСПЫТАНИЕ ПРОЙДЕНО В СООТВЕТСТВИИ С		NESSUN DANNO NO DAMAGE - KEIN SCHADEN AUCUN DOMMAGE - NINGUN DANO БЕЗ ПОВРЕЖДЕНИЙ
	<b>DILATAZIONE ALL'UMIDITÀ (IN MMM)</b> MOISTURE EXPANSION (IN MMM) - FEUCHTIGKEITSBEDINGTE AUSDEHNUNG (IN MMM) DILATATION À L'HUMIDITÉ (EN MMM) - DILATACIÓN CON LA HUMEDAD (EN MMM) ВЛАЖНОСТНОЕ РАСТЯЖЕНИЕ (В MMM)	EN ISO 10545-10	VALORE DICHIARATO DECLARED VALUE - ANGEBEBENER WERT VALEUR DÉCLARÉE - VALOR DECLARADO - ЗАЯВЛЕННОЕ ЗНАЧЕНИЕ		MAX 0,1 mm / m
	<b>RESISTENZA AL GELO</b> FROST RESISTANCE - FROSTBESTÄNDIGKEIT RESISTANCE AU GEL - RESISTENCIA AL HIELO МОРОЗОСТОЙКОСТЬ	EN ISO 10545-12	TEST SUPERATO SECONDO EN ISO 10545-1 TEST PASSED ACCORDING TO - TEST BESTANDEN NACH TEXTE DÉPASSÉ SELON - PRUEBA SUPERADA SEGÚN ИСПЫТАНИЕ ПРОЙДЕНО В СООТВЕТСТВИИ С		NESSUN DANNO NO DAMAGE - KEIN SCHADEN AUCUN DOMMAGE - NINGUN DANO БЕЗ ПОВРЕЖДЕНИЙ
	<b>RESISTENZA AI PRODOTTI CHIMICI USO DOMESTICO E ADDITIVI PER PISCINA</b> RESISTANCE TO HOUSEHOLD AND SWIMMING POOL CHEMICAL PRODUCTS - RBESTÄNDIGKEIT GEGEN HAUSHALTSCHIMIKALIEN UND ZUSATZSTOFFE FÜR SWIMMINGPOOLS - RÉSISTANCE AUX PRODUITS CHIMIQUES USAGE DOMESTIQUE ET ADDITIFS POUR PISCINE - RESISTENCIA A LOS PRODUCTOS QUÍMICOS DE USO DOMÉSTICO Y ADITIVOS PARA PISCINA - СТОЙКОСТЬ К ДЕЙСТВИЮ ВЪЛКОВЫХ ХИМИЧЕСКИХ СРЕДСТВ, ДОБАВКАМ В БАССЕЙНЫ	EN ISO 10545-13	B MIN		CONFORME COMPLYING - ERFÜLLT CONFORME - CONFORME COOTBETCTBYET
	<b>RESISTENZA A BASSE CONCENTRAZIONI DI ACIDI E ALCALI</b> RESISTANCE TO LOW CONCENTRATIONS OF ACIDS AND ALKALI - BESTÄNDIGKEIT BEI NIEDRIGEN KONZENTRATIONEN VON SÄUREN UND LAUGEN - RÉSISTANCE A BASSES CONCENTRATIONS D'ACIDES ET ALCALIS - RESISTENCIA A BAJAS CONCENTRACIONES DE ÁCIDOS Y ALCALIS - СТОЙКОСТЬ К ДЕЙСТВИЮ НИЗКИХ КОНЦЕНТРАЦИЙ КИСЛОТ И ЩЕЛОЧЕЙ	EN ISO 10545-13	VALORE DICHIARATO DECLARED VALUE - ANGEBEBENER WERT VALEUR DÉCLARÉE - VALOR DECLARADO - ЗАЯВЛЕННОЕ ЗНАЧЕНИЕ		CONFORME COMPLYING - ERFÜLLT CONFORME - CONFORME COOTBETCTBYET
	<b>RESISTENZA AD ALTE CONCENTRAZIONI DI ACIDI E ALCALI</b> RESISTANCE TO HIGH CONCENTRATIONS OF ACIDS AND ALKALI - BESTÄNDIGKEIT BEI HOHEN KONZENTRATIONEN VON SÄUREN UND LAUGEN - RÉSISTANCE A HAUTES CONCENTRATIONS D'ACIDES ET ALCALIS - RESISTENCIA A ALTAS CONCENTRACIONES DE ÁCIDOS Y ALCALIS - СТОЙКОСТЬ К ДЕЙСТВИЮ ВЫСОКИХ КОНЦЕНТРАЦИЙ КИСЛОТ И ЩЕЛОЧЕЙ	EN ISO 10545-13	VALORE DICHIARATO DECLARED VALUE - ANGEBEBENER WERT VALEUR DÉCLARÉE - VALOR DECLARADO - ЗАЯВЛЕННОЕ ЗНАЧЕНИЕ		CONFORME COMPLYING - ERFÜLLT CONFORME - CONFORME COOTBETCTBYET
	<b>RESISTENZA ALLE MACCHIE</b> RESISTANCE TO STAINS - FLECKENBESTÄNDIGKEIT RESISTANCE AUX TACHES - RESISTENCIA A LAS MANCHAS УСТОЙЧИВОСТЬ К ПЯТНООБРАЗОВАНИЮ	EN ISO 10545-14	VALORE DICHIARATO DECLARED VALUE - ANGEBEBENER WERT VALEUR DÉCLARÉE - VALOR DECLARADO - ЗАЯВЛЕННОЕ ЗНАЧЕНИЕ		CONFORME COMPLYING - ERFÜLLT CONFORME - CONFORME COOTBETCTBYET
	<b>CESSIONE DI PIOMBO E CADMIO</b> LEAD AND CADMIUM DISCHARGE - ABGABE VON BLEI UND CADMIUM PERTE DE PLOMB ET CADMIUM - CÉSION DE PLOMO Y CADMIO ВЫДЕЛЕНИЕ СВИНЦА И КАДМИЯ	EN ISO 10545-15	VALORE DICHIARATO DECLARED VALUE - ANGEBEBENER WERT VALEUR DÉCLARÉE - VALOR DECLARADO - ЗАЯВЛЕННОЕ ЗНАЧЕНИЕ		< AL LIMITE DI RILEVAMENTO < THAN INSTRUMENT LIMIT < UNMESSBARES WERT < LIMITE DEL INSTRUMENTO < LIMITE DEL INSTRUMENTO < НА ПЕРЕДЕЛЕ ОПРЕДЕЛИМОСТИ

PER I CERTIFICATI SPECIFICI, E VALORI PUNTUALI, CONTATTARE FINCIBEC SPA - FOR SPECIFIC CERTIFICATES AND DATA, CONTACT FINCIBEC S.P.A. - FÜR SPEZIELLE ZERTIFIKATE UND PUNKTWERTE, FINCIBEC S.P.A. KONTAKTIEREN - POUR LES CERTIFICATS SPÉCIFIQUES ET LES VALEURS PONCTUELLES, CONTACTER FINCIBEC S.P.A. - PARA LOS CERTIFICADOS ESPECÍFICOS Y LOS VALORES CONCRETOS, CONTACTE CON FINCIBEC S.P.A. - ВО ВОПРОСАХ СПЕЦИАЛЬНЫХ СЕРТИФИКАТОВ И ПОКАЗАТЕЛЕЙ СВЯЖИТЕСЬ С FINCIBEC SPA.

ESCLUSO PEZZI SPECIALI ED ELEMENTI DECORATIVI - WITH THE EXCEPTION OF SPECIAL PIECES AND DECORS

# CARATTERISTICHE TECNICHE / GRES FINE PORCELLANATO

TECHNICAL SPECIFICATIONS / PORCELAIN STONEWARE - TECHNISCHE EIGENSCHAFTEN / FEINSTEINZEUG - CARACTÉRISTIQUES TECHNIQUES / GRÈS FIN CÉRAME  
 CARACTERÍSTICAS TÉCNICAS / GRES FINO PORCELÁNICO - ТЕХНИЧЕСКИЕ ХАРАКТЕРИСТИКИ / МЛКОЗЕРНИСТЫЙ КЕРАМОГРАНИТ

STANDARDS : UNI EN 14411 ANNEX G - B1a / UNI EN ISO 13006 ANNEX G - B1a

	CARATTERISTICHE TECNICHE TECHNICAL DATA TECHNISCHE DATEN CARACTÉRISTIQUES TECHNIQUES CARACTERÍSTICAS TÉCNICAS ТЕХНИЧЕСКИЕ ХАРАКТЕРИСТИКИ	TIPO DI PROVA STANDARD OF TEST NORME DU TEST TESTNORM TIPO DE PRUEBA ТИП ТЕСТА	VALORI PRESCRITTI DALLE NORME INTERNATIONAL STANDARDS INTERNATIONALE NORMWERTE VALEURS PRÉVUES PAR LES NORMES VALORES PREVISTOS POR LAS NORMAS ПРЕДУСМОТРЕННЫЕ СТАНДАРТОМ		VALORE MEDIO NAXOS NAXOS AVERAGE VALUE NAXOS MITTELWERT VALEURS MOYEN NAXOS VALOR MEDIO NAXOS СРЕДНЕЕ ЗНАЧЕНИЕ NAXOS
			REQUIREMENTS FOR NOMINAL SIZE N		NAT
	CARATTERISTICHE DIMENSIONALI - SIZE CHARACTERISTICS - MASSEIGENSCHAFTEN - DETERMINATION DES CARACTÉRISTIQUES DIMENSIONELLES CARACTERÍSTICAS DIMENSIONALES - РАЗМЕРНЫЕ ХАРАКТЕРИСТИКИ		7 cm ≤ N ≤ 15 cm	N ≥ 15 cm	
	<b>LATI</b> SIDES - SEITEN COTES - CANTOS РАЗМЕРЫ СТОРОН	EN ISO 10545-2	± 0,9 mm	± 0,6% (± 2,0 mm)	CONFORME COMPLYING - ERFÜLLT CONFORME - CONFORME COOTBETCTBYET
	<b>SPESSORE</b> THICKNESS - DICKE ÉPAISSEUR - ESPESOR ТОЛЩИНА	EN ISO 10545-2	± 0,5 mm	± 5,0% (± 0,5 mm)	CONFORME COMPLYING - ERFÜLLT CONFORME - CONFORME COOTBETCTBYET
	<b>RETTILINEITÀ DEGLI SPIGOLI</b> STRAIGHTNESS OF SIDES - GERADLINIGKEIT DER KANTEN RECTITUDE DES ARÊTES - RECTITUD DE LOS CANTOS - КОСОУГОЛЬНОСТЬ	EN ISO 10545-2	± 0,75 mm	± 0,5% (± 1,5 mm)	CONFORME COMPLYING - ERFÜLLT CONFORME - CONFORME COOTBETCTBYET
	<b>ORTOGONALITÀ</b> RECTANGULARITY - RECHTWINKLIGKEIT PERPENDICULARITÉ - ORTOGONALIDAD КРИВИЗНА СТОРОН	EN ISO 10545-2	± 0,75 mm	± 0,5% (± 2 mm)	CONFORME COMPLYING - ERFÜLLT CONFORME - CONFORME COOTBETCTBYET
	<b>PLANARITÀ</b> SURFACE FLATNESS - EBENFLÄCHIGKEIT PLANEITÉ DE SURFACE - PLANEIDAD КРИВИЗНА ЛИЦЕВОЙ ПОВЕРХНОСТИ	EN ISO 10545-2	± 0,75 mm	± 0,5% (± 2,0 mm)	CONFORME COMPLYING - ERFÜLLT CONFORME - CONFORME COOTBETCTBYET
	<b>ASSORBIMENTO D'ACQUA</b> WATER ABSORPTION - WASSERAUFNAHME ABSORPTION D'EAU - ABSORCIÓN DE AGUA ВОДОПОГЛОЩЕНИЕ	EN ISO 10545-3	≤ 0,5 %		≤ 0,1 %
	<b>RESISTENZA ALLA FLESSIONE</b> FLEXION RESISTANCE - BIEGEFESTIGKEIT RESISTANCE A LA FLEXION - RESISTENCIA A LA FLEXIÓN ПРЕДЕЛ ПРОЧНОСТИ ПРИ ИЗГИБЕ	EN ISO 10545-4	S ≥ 1.300 N R ≥ 35 N/mm <sup>2</sup> .		CONFORME COMPLYING - ERFÜLLT CONFORME - CONFORME COOTBETCTBYET
	<b>RESISTENZA ALL'URTO</b> IMPACT RESISTANCE - STOSSFESTIGKEIT RESISTANCE AUX CHOCS - RESISTENCIA A LOS GOLPES УДАРОСТОЙКОСТЬ	EN ISO 10545-5	VALORE DICHIARATO DECLARED VALUE - ANGEGEBENER WERT VALEUR DÉCLARÉE - VALOR DECLARADO - ЗАЯВЛЕННОЕ ЗНАЧЕНИЕ		> 0,80
	<b>RESISTENZA ALL'ABRASIONE</b> ABRASION RESISTANCE - ABRIEBFESTIGKEIT RESISTANCE A L'ABRASION - RESISTENCIA A LA ABRASIÓN ПРОЧНОСТЬ НА ИСТИРАНИЕ	EN ISO 10545-6	≤ 175 mm <sup>3</sup>		CONFORME COMPLYING - ERFÜLLT CONFORME - CONFORME COOTBETCTBYET
	<b>COEFFICIENTE DI DILATAZIONE TERMICA LINEARE</b> COEFFICIENT OF LINEAR THERMAL-EXPANSION - LINEARER WÄRMEAUDEHNUNGSKOEFFIZIENT COEFFICIENT DE DILATATION THERMIQUE LINEAIRE - COEFFICIENT DE DILATACIÓN TÉRMICA LINEAL КОЭФФИЦИЕНТ ЛИНЕЙНОГО ТЕРМИЧЕСКОГО РАСТЯЖЕНИЯ	EN ISO 10545-8	VALORE DICHIARATO DECLARED VALUE - ANGEGEBENER WERT VALEUR DÉCLARÉE - VALOR DECLARADO - ЗАЯВЛЕННОЕ ЗНАЧЕНИЕ		α = 6,7 × 10 <sup>-6</sup> / °C
	<b>RESISTENZA AGLI SBALZI TERMICI</b> RESISTANCE TO THERMAL SHOCKS - BESTÄNDIGKEIT GEGEN TEMPERATURSCHWANKUNGEN RESISTANCE AUX CHOCS THERMIQUES - RESISTENCIA A LOS CHOQUES TÉRMICOS СТОЙКОСТЬ К ПЕРЕПАДАМ ТЕМПЕРАТУРЫ	EN ISO 10545-9	TEST SUPERATO SECONDO EN ISO 10545-1 TEST PASSED ACCORDING TO - TEST BESTANDEN NACH TEXTE DÉPASSÉ SELON - PRUEBA SUPERADA SEGÚN ИСПЫТАНИЕ ПРОЙДЕНО В СООТВЕТСТВИИ С		NESSUN DANNO NO DAMAGE - KEIN SCHADEN AUCUN DOMMAGE - NINGUN DAÑO БЕЗ ПОВРЕЖДЕНИЙ
	<b>DILATAZIONE ALL'UMIDITÀ (IN MMM)</b> MOISTURE EXPANSION (IN MMM) - FEUCHTIGKEITSBEDINGTE AUSDEHNUNG (IN MMM) DILATATION À L'HUMIDITÉ (EN MMM) - DILATACIÓN CON LA HUMEDAD (EN MMM) ВЛАЖНОСТНОЕ РАСТЯЖЕНИЕ (В MMM)	EN ISO 10545-10	VALORE DICHIARATO DECLARED VALUE - ANGEGEBENER WERT VALEUR DÉCLARÉE - VALOR DECLARADO - ЗАЯВЛЕННОЕ ЗНАЧЕНИЕ		MAX 0,1 mm / m
	<b>RESISTENZA AL GELO</b> FROST RESISTANCE - FROSTBESTÄNDIGKEIT RESISTANCE AU GEL - RESISTENCIA AL HIELO МОРОЗОСТОЙКОСТЬ	EN ISO 10545-12	TEST SUPERATO SECONDO EN ISO 10545-1 TEST PASSED ACCORDING TO - TEST BESTANDEN NACH TEXTE DÉPASSÉ SELON - PRUEBA SUPERADA SEGÚN ИСПЫТАНИЕ ПРОЙДЕНО В СООТВЕТСТВИИ С		NESSUN DANNO NO DAMAGE - KEIN SCHADEN AUCUN DOMMAGE - NINGUN DAÑO БЕЗ ПОВРЕЖДЕНИЙ
	<b>RESISTENZA AI PRODOTTI CHIMICI USO DOMESTICO E ADDITIVI PER PISCINA</b> RESISTANCE TO HOUSEHOLD AND SWIMMING POOL CHEMICAL PRODUCTS - RBESTÄNDIGKEIT GEGEN HAUSHALTS-UND ZUSATZSTOFFE FÜR SWIMMINGPOOLS - RESISTANCE AUX PRODUITS CHIMIQUES USAGE DOMESTIQUE ET ADDITIFS POUR PISCINE - RESISTENCIA A LOS PRODUCTOS QUÍMICOS DE USO DOMÉSTICO Y ADITIVOS PARA PISCINA - СТОЙКОСТЬ К ДЕЙСТВИЮ БЫТОВЫХ ХИМИЧЕСКИХ СРЕДСТВ, ДОБАВКАМ В БАССЕЙНЫ	EN ISO 10545-13	B MIN		CONFORME COMPLYING - ERFÜLLT CONFORME - CONFORME COOTBETCTBYET
	<b>RESISTENZA A BASSE CONCENTRAZIONI DI ACIDI E ALCALI</b> RESISTANCE TO LOW CONCENTRATIONS OF ACIDS AND ALKALI - BESTÄNDIGKEIT BEI NIEDRIGEN KONZENTRATIONEN VON SÄUREN UND LAUGEN - RESISTANCE À BASSES CONCENTRATIONS D'ACIDES ET ALCALIS - RESISTENCIA A BAJAS CONCENTRACIONES DE ÁCIDOS Y ALCALIS - СТОЙКОСТЬ К ДЕЙСТВИЮ НИЗКИХ КОНЦЕНТРАЦИЙ КИСЛОТ И ЩЕЛОЧЕЙ	EN ISO 10545-13	VALORE DICHIARATO DECLARED VALUE - ANGEGEBENER WERT VALEUR DÉCLARÉE - VALOR DECLARADO - ЗАЯВЛЕННОЕ ЗНАЧЕНИЕ		CONFORME COMPLYING - ERFÜLLT CONFORME - CONFORME COOTBETCTBYET
	<b>RESISTENZA AD ALTE CONCENTRAZIONI DI ACIDI E ALCALI</b> RESISTANCE TO HIGH CONCENTRATIONS OF ACIDS AND ALKALI - BESTÄNDIGKEIT BEI HOHEN KONZENTRATIONEN VON SÄUREN UND LAUGEN - RESISTANCE À HAUTES CONCENTRATIONS D'ACIDES ET ALCALIS - RESISTENCIA A ALTAS CONCENTRACIONES DE ÁCIDOS Y ALCALIS - СТОЙКОСТЬ К ДЕЙСТВИЮ ВЫСОКИХ КОНЦЕНТРАЦИЙ КИСЛОТ И ЩЕЛОЧЕЙ	EN ISO 10545-13	VALORE DICHIARATO DECLARED VALUE - ANGEGEBENER WERT VALEUR DÉCLARÉE - VALOR DECLARADO - ЗАЯВЛЕННОЕ ЗНАЧЕНИЕ		CONFORME COMPLYING - ERFÜLLT CONFORME - CONFORME COOTBETCTBYET
	<b>RESISTENZA ALLE MACCHIE</b> RESISTANCE TO STAINS - FLECKENBESTÄNDIGKEIT RESISTANCE AUX TACHES - RESISTENCIA A LAS MANCHAS УСТОЙЧИВОСТЬ К ПЯТНООБРАЗОВАНИЮ	EN ISO 10545-14	VALORE DICHIARATO DECLARED VALUE - ANGEGEBENER WERT VALEUR DÉCLARÉE - VALOR DECLARADO - ЗАЯВЛЕННОЕ ЗНАЧЕНИЕ		CONFORME COMPLYING - ERFÜLLT CONFORME - CONFORME COOTBETCTBYET
	<b>CESSIONE DI PIOMBO E CADMIO</b> LEAD AND CADMIUM DISCHARGE - ABGABE VON BLEI UND CADMIUM PERTE DE PLOMB ET CADMIUM - CESIÓN DE PLOMO Y CADMIO ВЫДЕЛЕНИЕ СВИНЦА И КАДИЙА	EN ISO 10545-15	VALORE DICHIARATO DECLARED VALUE - ANGEGEBENER WERT VALEUR DÉCLARÉE - VALOR DECLARADO - ЗАЯВЛЕННОЕ ЗНАЧЕНИЕ		< LIMITE DI RILEVAMENTO < THAN INSTRUMENT LIMIT < UNMESSBARES WERT < LIMITE DEL INSTRUMENT < LIMITE DEL INSTRUMENTO < НА ПРЕДЕЛЕ ОТЧЕТНОСТИ
	<b>SCIVOLOSITÀ</b> SKID RESISTANCE - RUTSCHWERT GLISSANCE - ADHERENCIA СКОЛЬЗКОСТЬ	ANSI A 137.1 DIN 51130 DIN 51097	WET DCOF > 0,42 - -		> 0,42 R9 A+B (MOOSAIC 36 TESSERE)

PER I CERTIFICATI SPECIFICI, E VALORI PUNTUALI, CONTATTARE FINCIBEC SPA - FOR SPECIFIC CERTIFICATES AND DATA, CONTACT FINCIBEC S.P.A. - FÜR SPEZIELLE ZERTIFIKATE UND PUNKTWERTE, FINCIBEC S.P.A. KONTAKTIEREN - POUR LES CERTIFICATS SPÉCIFIQUES ET LES VALEURS PONCTUELLES, CONTACTER FINCIBEC S.P.A. - PARA LOS CERTIFICADOS ESPECÍFICOS Y LOS VALORES CONCRETOS, CONTACTE CON FINCIBEC S.P.A. - ВО ВСЯКОМ СПЕЦИАЛЬНЫХ СЕРТИФИКАТОВ И ПОКАЗАТЕЛЕЙ СВЯЖИТЕСЬ С FINCIBEC SPA.

ESCLUSO PEZZI SPECIALI ED ELEMENTI DECORATIVI - WITH THE EXCEPTIO N OF DECORS AND SPECIAL PIECES.





FINC  
socic