

SINTRA







SINTRA Black 30x60





SINTRA
Beige 21,6x21,6 Antislip **R11**
Beige 21,6x43,5 Antislip **R11**

**SINTRA**Beige 21,6x21,6 Antislip **R11**Beige 21,6x43,5 Antislip **R11**Iron 21,6x21,6 Antislip **R11**Iron 21,6x43,5 Antislip **R11**

WHITE



cod. **S10801** White 30x60 **39**
 cod. **S10801A** White 30x60 **40**
 Antislip **R11**

GREY



cod. **S46802NORET** Grey 46x91 **A8**



cod. **S10802NORET** Grey 30x60 **39**
 cod. **S10802A** Grey 30x60 **40**
 Antislip **R11**

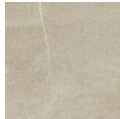
BEIGE



cod. **S10804** Beige 30x60 **39**
 cod. **S10804A** Beige 30x60 **40**
 Antislip **R11**



cod. **S17804A** Beige 21,6x43,5 **38**
 Antislip **R11**



cod. **S19804A** Beige 21,6x21,6 **38**
 Antislip **R11**

TAUPE

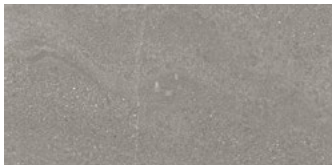


cod. **S46803NORET** Taupe 46x91 **A8**



cod. **S10803** Taupe 30x60 **39**
 cod. **S10803A** Taupe 30x60 **40**
 Antislip **R11**

IRON



cod. **S10805** Iron 30x60 **39**
 cod. **S10805A** Iron 30x60 **40**
 Antislip **R11**



cod. **S17805A** Iron 21,6x43,5 **38**
 Antislip **R11**

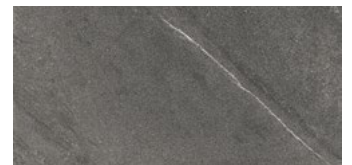


cod. **S19805A** Iron 21,6x21,6 **38**
 Antislip **R11**

BLACK



cod. **S46800NORET** Black 46x91 **A8**



cod. **S10800** Black 30x60 **39**
 cod. **S10800A** Black 30x60 **40**
 Antislip **R11**



SINTRA Grey 30x60 Antislip **R11**



SINTRA White 30x60



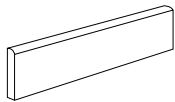
SINTRA Taupe 46x91

CARATTERISTICHE TECNICHE • TECHNICAL CHARACTERISTICS

46x91 ∇ 10mm 30x60 | 21,6x43,5 | 21,6x21,6 ∇ 9,5mm

V4  PEI (V) PEI (IV)
taupe
black

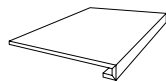
PEZZI SPECIALI SPECIAL PIECES



SBT + COD. Battiscopa

7,5x60
10,5x43,5

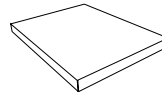
6x  11
15x  9



CR + COD. Gradone

30x60+3+3
21,6x33+3+3

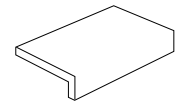
4x  A7
4x  35



ACR + COD. Angolo Gradone

30x60+3+3
21,6x33+3+3

4x  60
2x  A7



EL + COD. Elemento L Monolitico

15x30+4

8x  19

IMBALLI PACKING	pcs/box	mq/box	kg/box	box/pallet	mq/pallet	kg/pallet
46x91	3	1,26	28,20	27	39,00	923,00
30x60	6	1,08	22,20	40	43,20	910,00
21,6x43,5	14	1,31	25,00	56	73,36	1.420,00
21,6x21,6	28	1,31	25,00	60	78,60	1.520,00